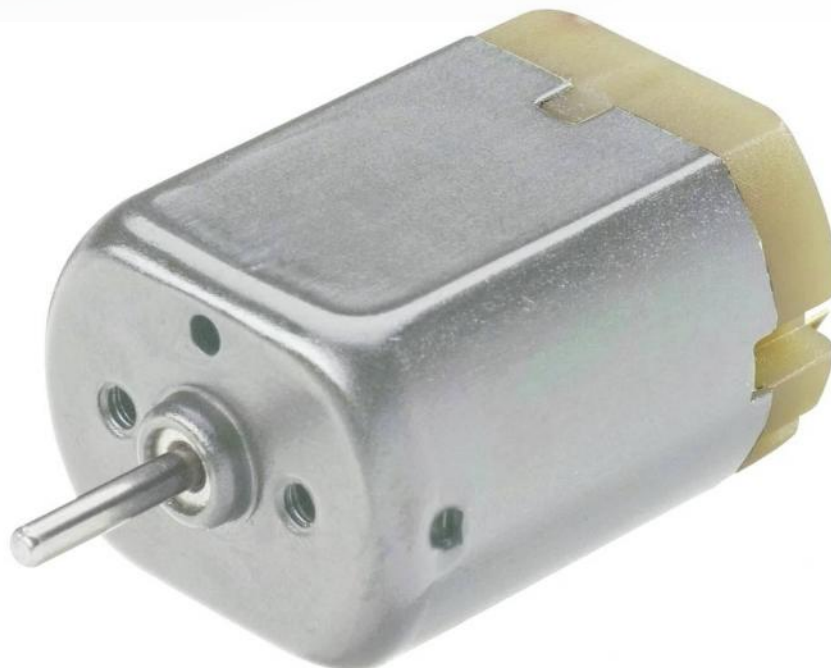


Reference : MOTCC



Technical characteristics:

- Usable power: 4.3 W
- Supply voltage: 7 - 15 V DC
- Rotation speed: up to 11600 rpm
- Max torque: 1.47 N.cm
- Shaft dimensions: $\varnothing 2 \times 9.7$ mm
- Max voltage: 12 V DC
- Vacuum current: 0.08 A
- Max. Current: 0.143 A
- Dimensions / Mass: 30.6 x 18.3 x 24.2 mm / 38 g