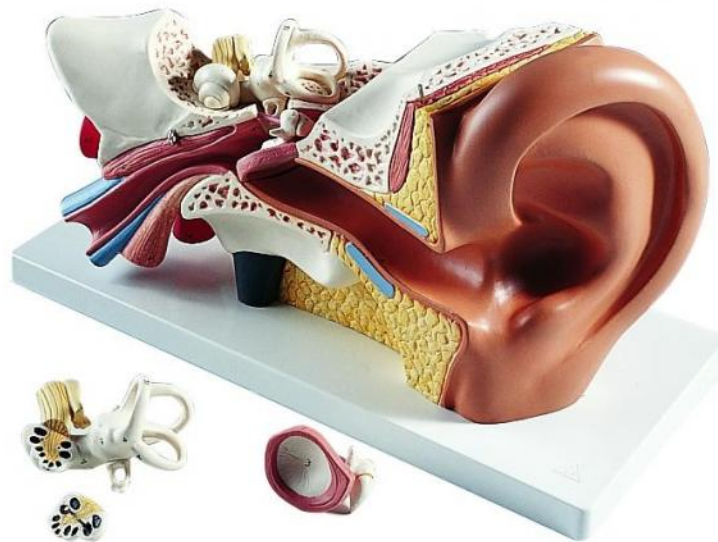


Reference : E10



Identification of sensory organs

Ear in 4 parts enlarged 3 times.

Representation of the outer, middle and inner ear.

The tympanum with the malleus and the incus as well as the labyrinth with the stapes, the cochlea and the vestibular-cochlear nerve are removable. On base.

Comes with explanatory instructions.

34 x 16 x 19 cm