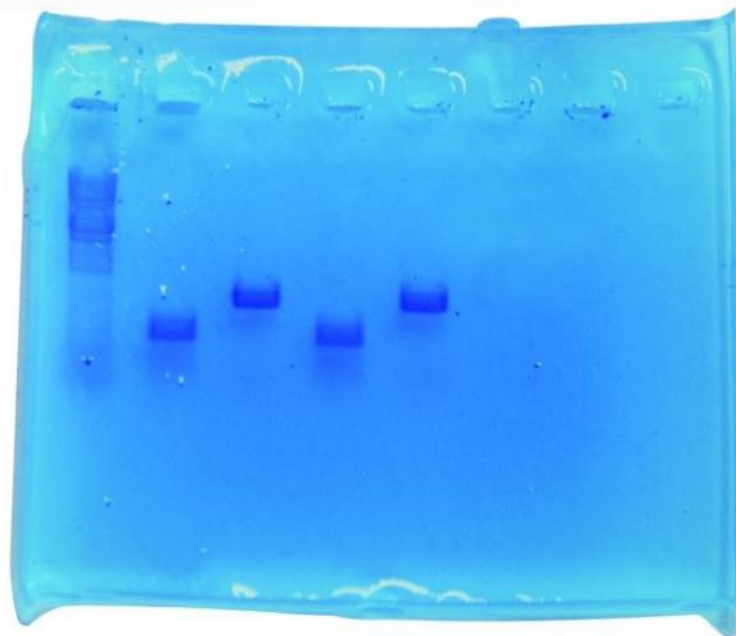


# ELECTROPHORESIS OF BEE DNA: MIGRATE IN ORDER TO SEQUENCE

References : ELECTAB, ELECTABSG



## Cognitive objectives:

This kit enables electrophoresis using fragments simulating the amplified mitochondrial DNA of bees that represent species that can be collected in France. This kit allows you to simulate agarose gel genotyping.

Composition (for 10 gels of 25ml with 8 wells):

- 150 $\mu$ L of Control DNA: Q
- 150  $\mu$ L of Control DNA: PQ
- 150 $\mu$ L of DNA to be identified 1
- 150 $\mu$ L of DNA to be identified 2
- 150 $\mu$ L of marker
- 2g of agarose
- 100ml TAE 10 x

Necessary material:

- Micropipettes and cones
- Absolute ethanol
- Distilled water
- DNA electrophoresis cell with gel mould and 6-well gel comb
- Power supply for DNA electrophoresis tank
- One litre bottles
- Anti-heat glove or grip mitt
- Microwave or water bath
- Latex gloves

<b>Reference</b>	<b>Tank</b>	<b>Dye</b>
ELECTAB	standard	Azure A
ELECTABSG	BlueGel	SafeGreen