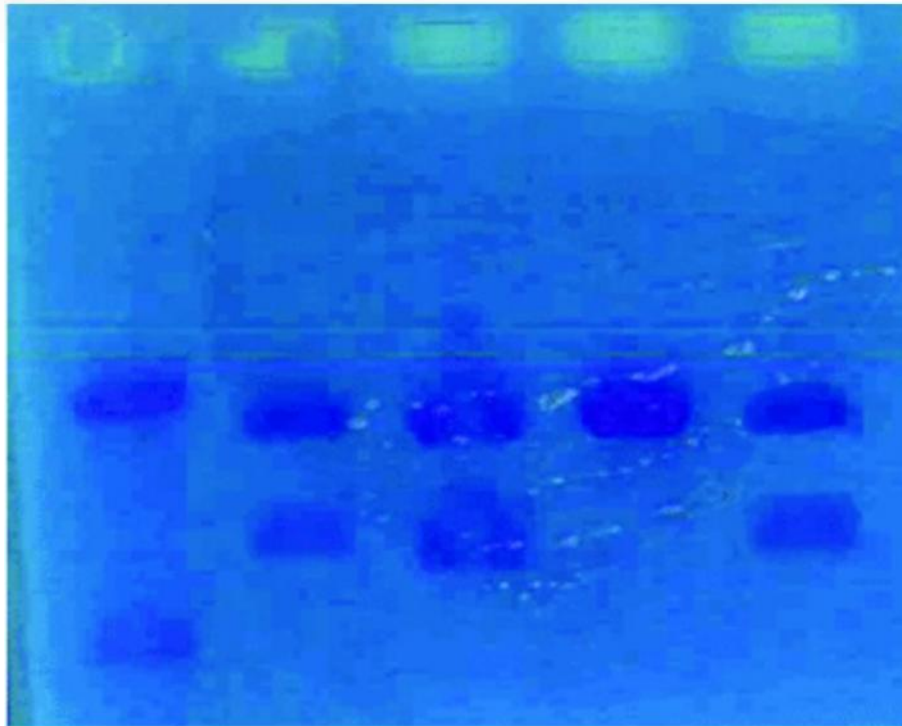


# ELECTROPHORESIS OF THE SUSPECT'S DNA

References : ADNSUSP., ADNSUSPSG



This kit enables agarose gel electrophoresis of DNA.

Used in our scenario, this electrophoresis compares the DNA found on a crime scene with the DNA of four individuals to prove the presence of the main suspect at the crime scene.

Composition of the kit (for 8 gels):

- 125 $\mu$ L of DNA taken from the crime scene
  - 4 x 125 $\mu$ L of DNA (four suspects)
  - 100ml of TAE 10 x buffer to be diluted 10 times to obtain 1000ml of buffer
  - 2g of agarose
- Educational and technical instructions available on our website.

Necessary material:

- Heat grip mitt
- Electrophoresis tank
- Power supply

Conservation:  
3 months  
DNA: -20 ° C  
Buffer, stain: Fridge

<b>Reference</b>	<b>Tank</b>	<b>Dye</b>
ADNSUSP.	standard	Azure A
ADNSUSPSG	BlueGel	SafeGreen