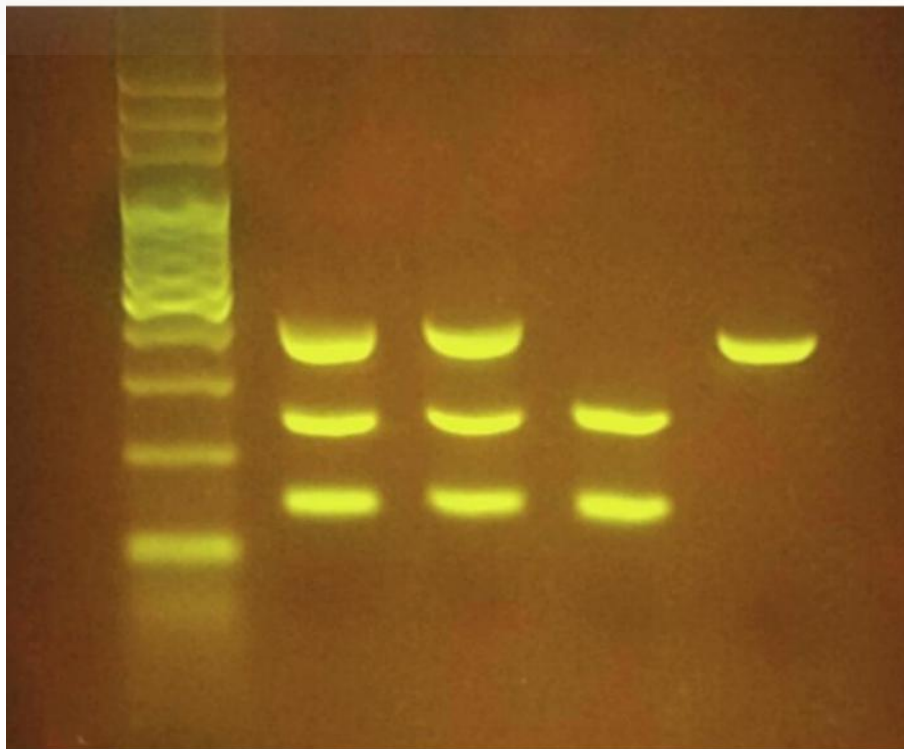


References : SAFEGREEN, AZUR, TAMTAE, PONCEAU, LAMNDG, BLEUCHARGE



100 μ L of SafeGreen Dye for DNA QSP 500 μ L of DNA

This DNA dye is safe because it does not penetrate the living cell membrane.

It fluoresces in real time (during the migration) the DNA coupled with a blue light (safe) and an orange mask.

It is capable of detecting 0.2 to 0.6 ng of DNA per gel strip.

It is used at 1/5 or 1 μ L of SAFEGREEN for 5 μ L of pure DNA.

Réf : SAFEGREEN

Azure A DNA dye

Dose for 1 L

Réf : AZUR

Deposit blue solution 300 μ L

Réf : BLEUCHARGE

Ponceau S Red 1L

Protein staining

Formula: C₂₂H₁₂N₄Na₄O₁₃S₄

Min. content: 75% ; M : 760.57;

H : 315-319-335 / D: 261-305+351+338

CAS : 006226-79-5

Recommended protection: Glasses, gloves, jacket, hood

Réf : PONCEAU

TAE buffer

Dose for 1 L, ideal for DNA migration

Réf : TAMTAE

undigested lambda bacteriophage DNA + deposit blue
Réf : LAMNDG