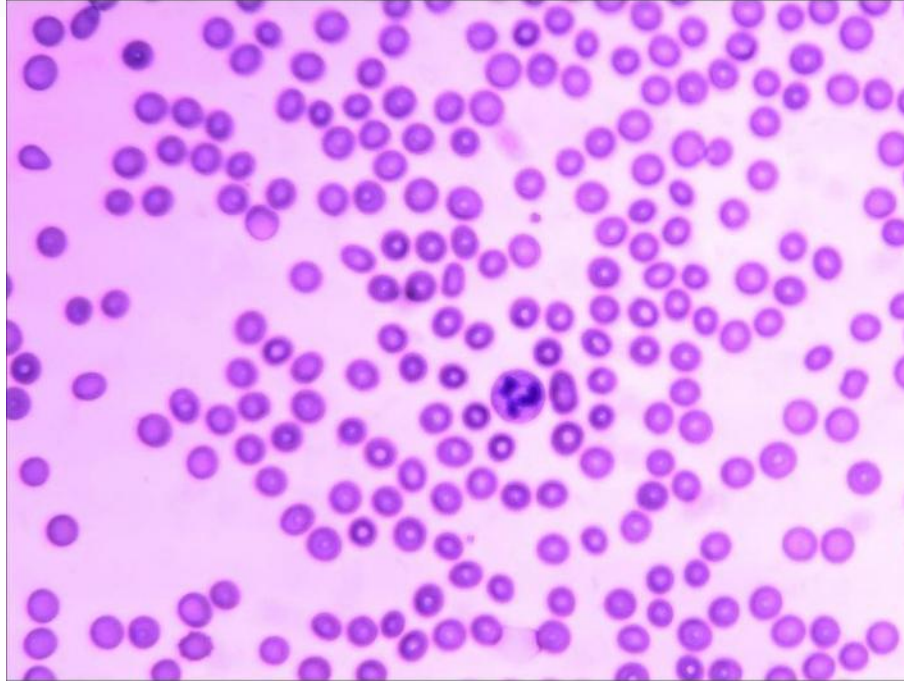


Reference : COLRASA



Less than 15 seconds to stain a smear

""Red blood cell" Character and degree of kinship between vertebrates "

Cognitive objectives:

Show through the observation of blood smears from different vertebrates (human, sardine, chicken...) that there is a relationship of kinship between different species.

Proposed activity:

The activity involves the making and staining of blood smears from different species (not provided). This kit offers a stain that is a variation of the classic May-Grünwald Giemsa stain. This variant allows rapid staining that occurs by three successive baths (a fixer and two dyes).

The staining is carried out in 15 seconds whereas normally it takes about 15 minutes.

Handling, observation and interpretation can thus be performed in the same lab session and under conditions allowing an evaluation of experimentation abilities.

Composition (for 100 to 200 stains):

- 100ml of fixing agent (alcohol)
- 100ml of ready-to-use May-Grunwäld rapid dye
- 100ml of ready to use Giemsa rapid dye
- 200 coloured stickers to mark the side of the smear

Technical and educational instructions available on our website.

Conservation:

1 month between 15 and 25° C