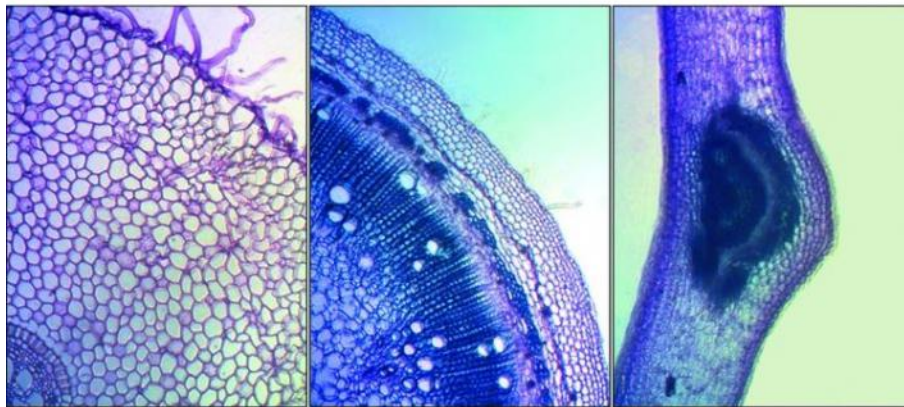


# FAST STAINING OF PHLOEM AND XYLEM

Reference : COLXP



## Result in - 30 minutes

### General outline and simple morphological study of the plant

Cognitive objectives:

Staining plant structures in class

Activity:

Prepare fresh cuttings of stems or leaves of plants and stain for observation during the same lab session.

Ready to use; all solutions for the preparation, staining and observation of your samples are provided in this kit.

Composition (for 50 stains):

- A bottle of 50ml of bleach
- A bottle of 50ml of iodine green
- A bottle of 50ml of carmine alum
- A bottle of 50ml of water
- A bottle of 50ml of glycerol

Technical and educational instructions available on our website.

Necessary material:

- Fresh vegetable tissue sections
  - Watch glasses
  - Fine tip forceps
  - Slides and cover slips
- Conservation: room temperature