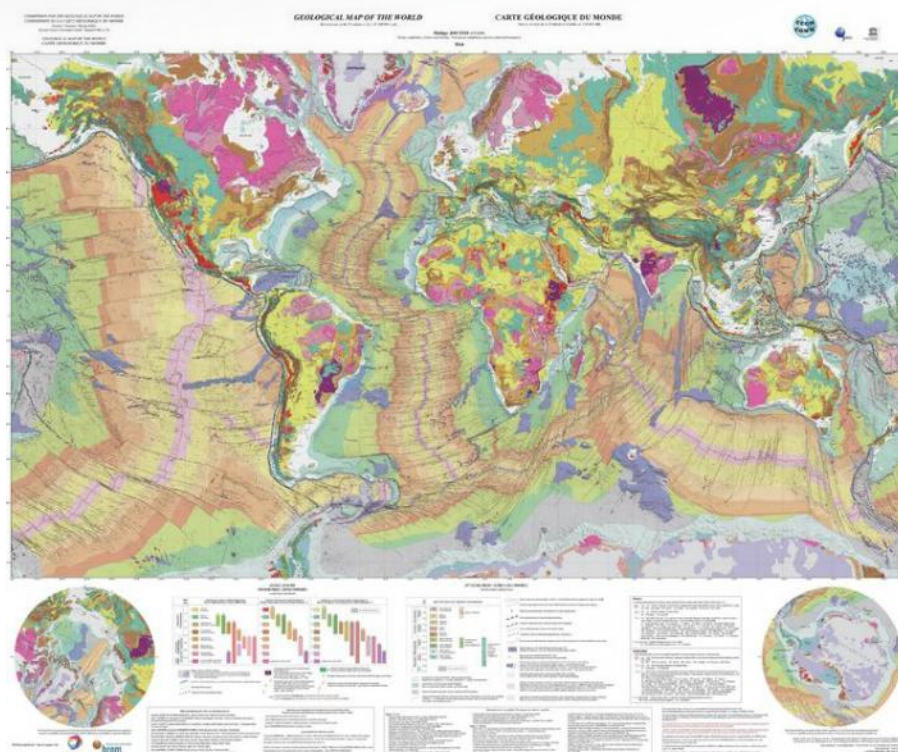


Reference : CGMONDE35



3rd revised edition (2014); 1: 35,000,000; 1 sheet - 118 x 98 cm

Explanatory notes are freely downloadable in pdf format from www.ccgm.org.

This edition (August 2014), centred on the Atlantic, has been entirely designed so that it fits on a single sheet while having an improved readability compared to the version reduced to 1 / 50,000,000.

The new map corrects the infographic errors of the 2010 editions and, above all, enhances the existing geological data with a shaded and monochrome physiographic background, more marked on the continents than on the oceans. Colour changes of some geological units of major interest have been made:

Cenozoic volcanism; traps; oceanic plateaus, hot spots and under water mountains. The representation of the overlapping fronts, whatever their nature (subduction zones, accretion prisms, overlaps ...) has been homogenised.