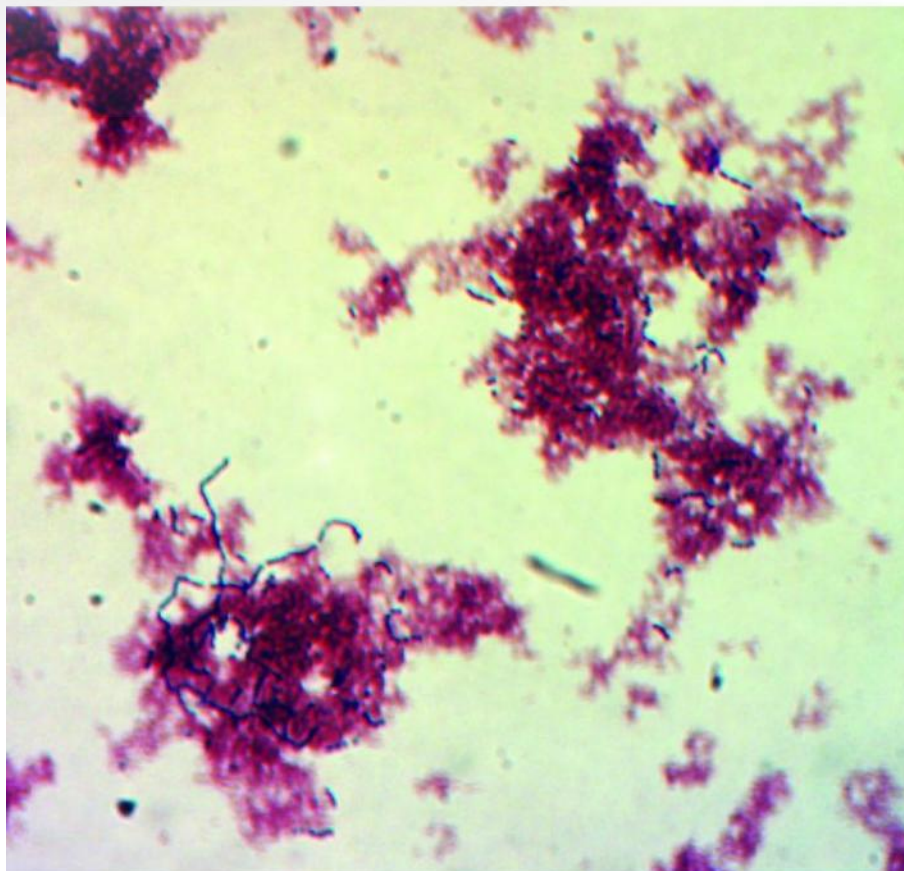


Reference : COLGRAM



Identify your Gram + / Gram -

Particularly useful for staining lactic acid bacteria.

Make a quick stain of a yoghurt or cheese smear in class and observe the lactic acid bacteria with the students.

Composition:

- 80ml of Purple Oxalate Crystal
- 80ml of stabilised Lugol liquid
- 80ml of rapid differentiator
- 80ml of Safranin

- 4 5ml droppers

Technical and educational instructions available on our website.

No. of pairs of students: 30 to 100

Materials needed: yoghurt, slides, cover slips, sterile water

Preparation time: 5 minutes the day before

Conservation: 6 months at room temperature