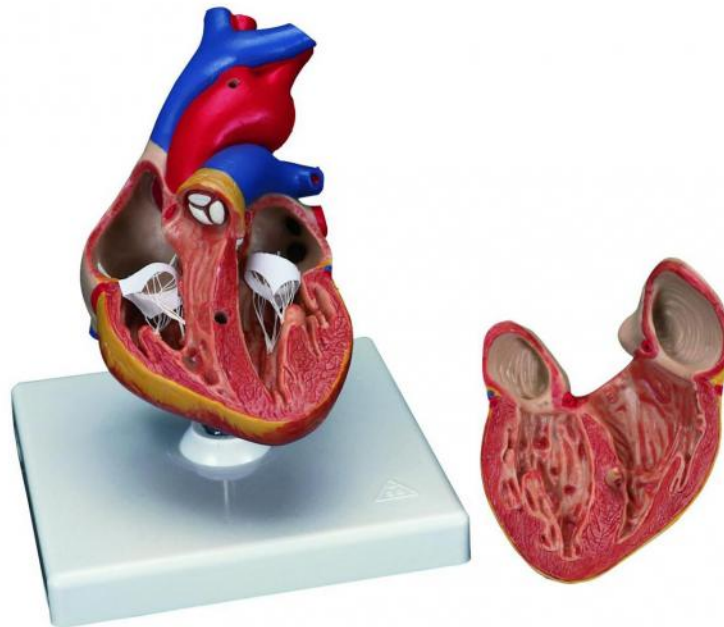


Reference : G08



Observation of arteries and veins (for example in the heart)

Classic heart, in two parts

This 3/4 size heart can be disassembled into two parts. It enables the study of the anatomy of the heart in detail with its ventricles, its auricles, its veins and the aorta.

The anterior wall of the heart is removable and gives access to the cavities.

Delivered on removable stand with explanatory instructions.

19 x 12 x 12 cm