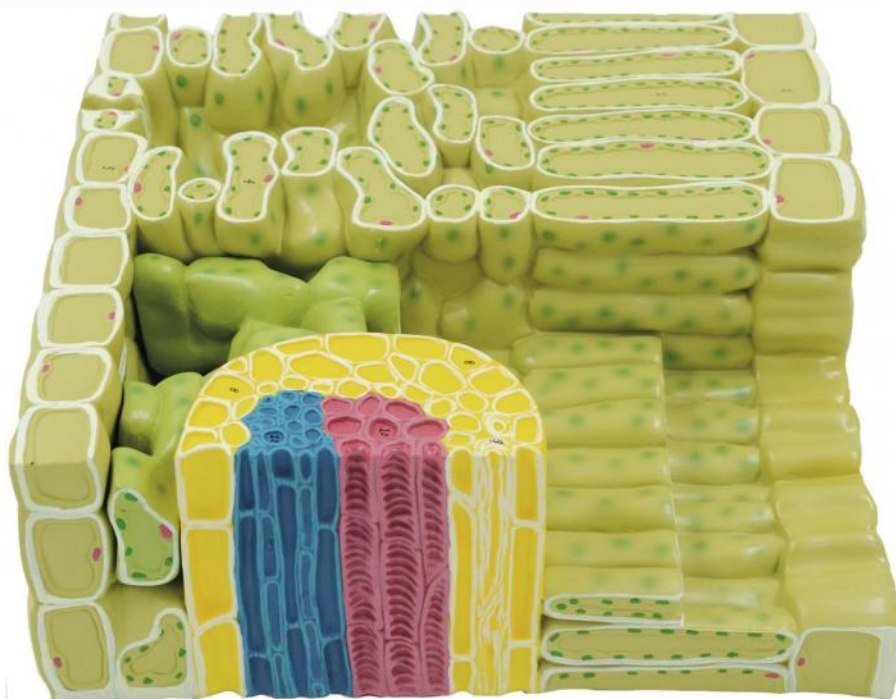


Reference : MODFEUIL



Leaf cross section model

Model enlarged 700 times detailing the internal structure of a dicotyledon leaf. Longitudinal and cross sections of the leaf can be used to identify the elements of the leaf: upper epidermis, palisade parenchyma, vein, spongy tissue, inferior epidermis, stomata, stomatal cell, fibers, xylem, phloem, etc.