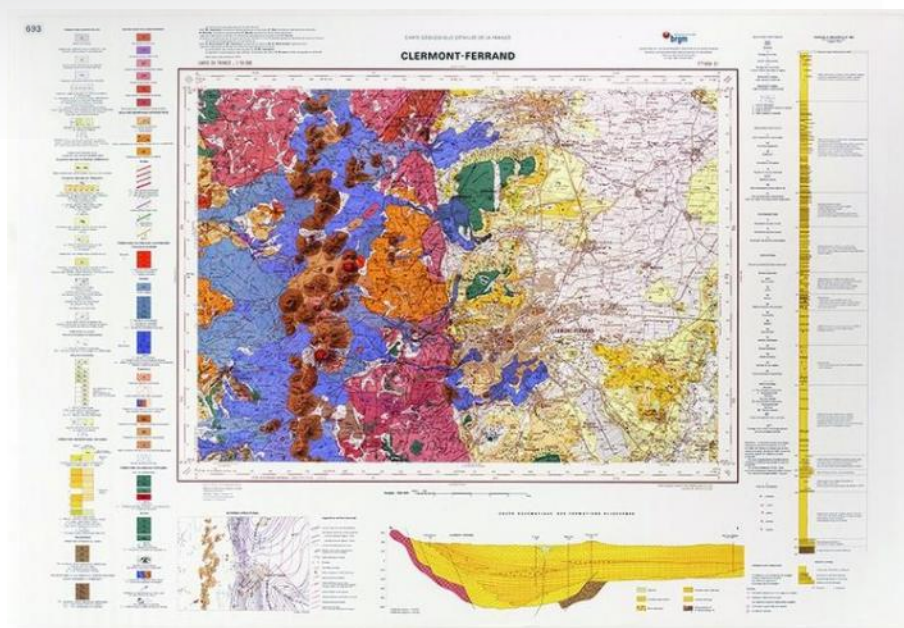


Reference : CG1/693



The geological map at 1/250,000

France has been artificially cut up into 44 parts for a regional study of the geology of France.

Geological maps at 1/250,000 are a first class educational tool for all those interested in earth sciences through large geological structures (Alps, Jura, Provence, Paris Basin)

Flat map delivered in a cardboard tube or folded under a plastic jacket (specify your choice when ordering).

Average map size: 95 x 60 cm