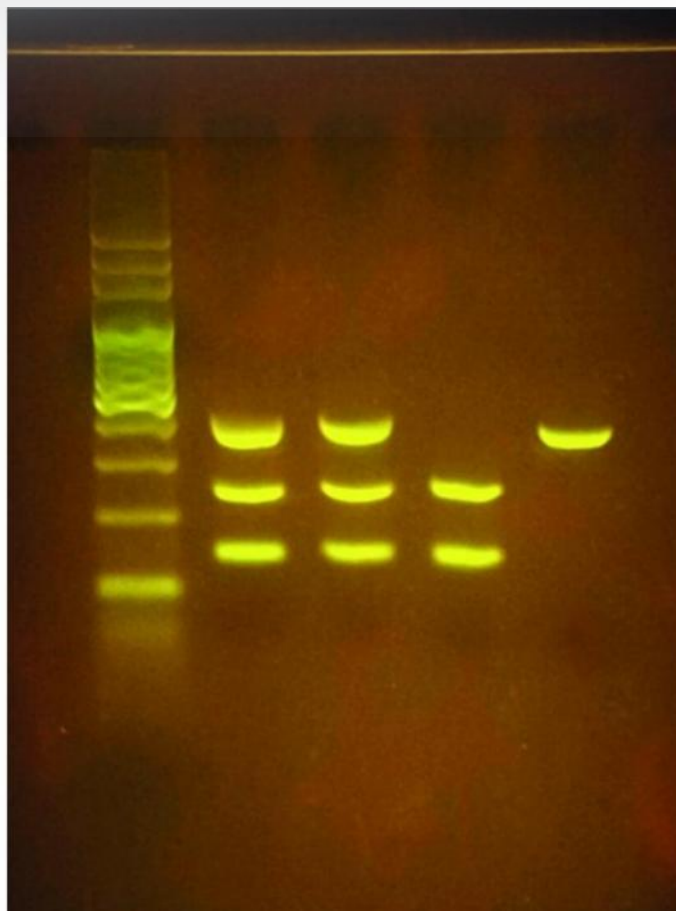


Reference : DREPADN



DNA electrophoresis on agarose gel

Handling and results in 45 minutes

Mutations and health

In this PW, students are presented with the medical history of a fictional family and must work to establish a genetic diagnosis to detect potential sickle cell disease.

This practical activity presents the fundamentals of DNA analysis by comparing the separated DNA profiles by gel electrophoresis.

Students will become familiar with DNA separation techniques and determine the size of a DNA fragment to obtain a genetic diagnosis.

Technique used: DNA electrophoresis on agarose gel

Required time : 45 min

Composition for 40 students maximum:

- 4 DNA samples
- 1 tube of DNA molecular weight marker
Reagents are compatible with blueGel™ or other conventional DNA electrophoresis systems