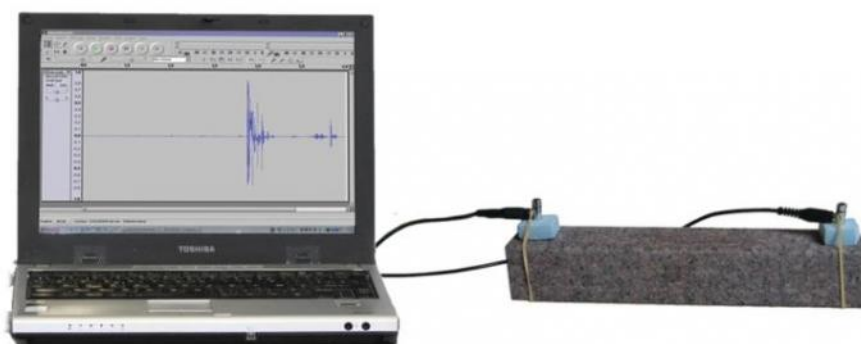


# SPEED OF PROPAGATION OF SEISMIC WAVES ACCORDING TO THE MATERIAL KIT

Reference : SMCL



This kit makes it possible to measure the propagation velocities of seismic waves in different materials, it is accompanied by a very detailed note which suggests a PW session in two parts.

Sismocel is primarily intended for use in small groups of students working independently. Sismocel is primarily intended for use in small groups of autonomous students.

Composition :

- 2 seismic wave sensors + connection cables
- 1 connection adapter on the computer sound card
- Adapters + clamps for iron and granite bars
- 1 granite bar
- 1 iron bar
- 1 striking mechanism
- 1 CDROM (Sismocel instructions)

Environment required:

Computer; Audacity software installed; Excel, Graph, and Microsoft Paint software installed;

slide calliper, otherwise flat ruler; electronic scale, stereo sound card.