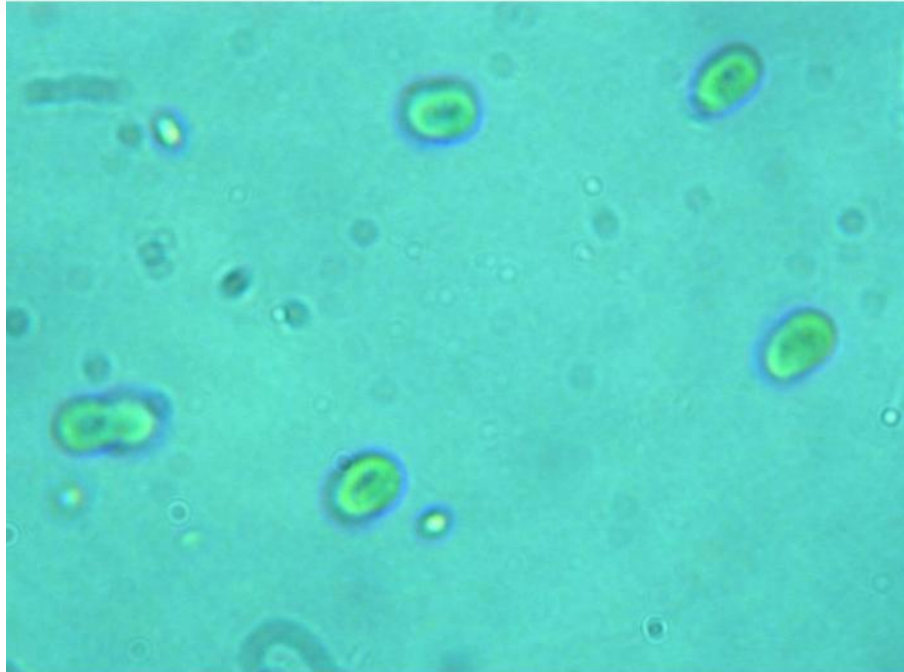


Reference : SYN.



## Synechocystis

This strain has the particularity of presenting a chromatic adaptation with respect to light at different wavelengths. Exposed to a red light, it does not produce red phycoerythrin and it looks green. Under green light, it produces red phycoerythrin in abundance and then appears black grey; here we speak of complementary chromatic adaptation. In natural light, it looks very dark black-blue.