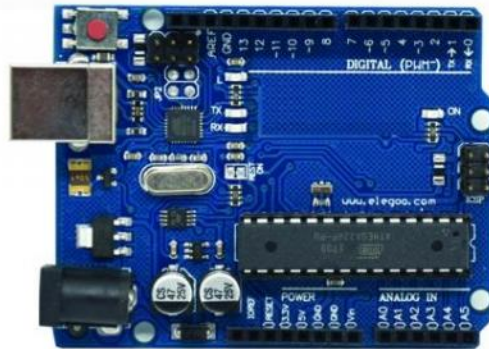


UNO R3 CARD

Reference : CARTR3



The Uno interface is based on the ATmega328 microcontroller. It has 14 digital inputs / outputs (6 of which can be used as PWM outputs), 6 analog inputs, a 16 MHz crystal oscillator, a USB connection, a power supply, an ICSP connector, and a reset button. It contains everything needed to drive the microcontroller; just connect it to a computer with a USB cable (provided) to use it easily.

characteristics

- Microcontroller: ATmega328
- Nominal operating voltage: 5V
- Digital inputs / outputs: 14
- Analog inputs: 6
- Flash memory: 32 KB (ATmega328)
- Clock frequency: 16 MHz